

ORIENTAL DINGHY CLUB
2017 ORIENTAL CUP REGATTA
September 16, 2017

—SAILING INSTRUCTIONS—

PHRF and CRUISING FLEET

1 RULES

- 1.1 The regatta will be governed by the rules as defined in *The Racing Rules of Sailing 2017 - 2020*.
- 1.2 A violation of rule 55 can result in a penalty other than disqualification.

2 NOTICES TO COMPETITORS

- 2.1 Notices to competitors will be posted on the official notice board.

3 CHANGES TO SAILING INSTRUCTIONS

- 3.1 Any changes to the sailing instructions will be posted before 0750 on Saturday.
- 3.2 Oral changes to the sailing instructions may be given on the water by hail or VHF from the Signal Boat under code flag “L”.

4 SIGNALS MADE ASHORE

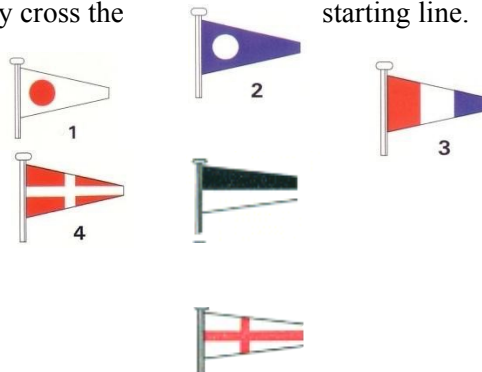
- 4.1 Signals made ashore will be displayed on the official notice board in the breezeway near the OI&M office.
- 4.2 When AP flag is displayed ashore ‘1 minute’ is replaced with ‘not less than ‘60 minutes’ in the race signal AP. This changes race signal AP.

5 SCHEDULE OF RACES

- 5.1 Dates of racing: Saturday, September 16, 2017.
- 5.2 Number of races: We will attempt to hold three races but one race will constitute a regatta.
- 5.3 The scheduled time of the first warning signal for the non-cruising classes is 1100.
- 5.4 When the Signal boat hoists the Lima flag, all boats shall pass by the starboard side of the signal boat and check in with the race committee prior to their warning signal.
- 5.5 The cruising class start times will be determined on the water (see below) and it is anticipated that this class will start before the 1st start of the Spinnaker and JAM classes. It will use a modified start where each boat will have a separate starting time based on when they cross the starting line.

6 CLASS / DIVISION FLAGS

- | | |
|-----------------|-------------------|
| 6.1 Spinnaker A | Numeral Pennant 1 |
| Spinnaker B | Numeral Pennant 2 |
| Spinnaker C | Numeral Pennant 3 |
| JAM A | Numeral Pennant 4 |
| JAM B | Numeral Pennant 6 |
| JAM C | Numeral Pennant 7 |
| Cruising | Numeral Pennant 8 |



PHRF rating bands within the divisions (if necessary) will be determined by the PRO based on the boats' ratings and are expected to be 30-50 seconds per mile 'wide'. However, in the interests of enhancing competition, these bands may be adjusted at the sole discretion of the PRO.

7 RACING AREA

7.1 The racing area will be on the Neuse River near Oriental.

8 COURSES

8.1 The signal boat will set courses in the waters off of Oriental, NC.

8.2 The courses to be sailed will be displayed on the Signal Boat prior each class's Warning Signal. Classes may be assigned different courses. The courses may be single or multiple windward/leeward (WL), triangle (T), or combinations.

8.3 The cruising class will sail a single, longer course using government marks.

8.4 Course diagrams are shown in the appendix to these sailing instructions.

8.5 The RC may shorten the course by setting up a finish line at any mark and raising code flag "S".

9 MARKS

9.1 Marks (W), (L) and Jibe Mark (J) are orange marks & the start/finish mark is a yellow mark.

10 THE START AND FINISH

10.1 The start and finish line will be between the orange flag on the signal boat and the adjacent start/finish mark.

10.2 The Start/Finish Line is closed except for starting and finishing for any W/L, T or TWL course.

10.3 At the start of the cruising class, the RC will make 10 long sounds. Thereafter the starting line is open and **cruising class boats may start anytime within 30 minutes of the start time.** The race committee will note each boat's start time for scoring purposes. At the end of the 30 minute window, the RC will again make 10 long sounds. Cruising boats may not start after this time.

11 SCORING

11.1 The Handicap system will be PHRF Time-on-Time. There will be no throwouts.

11.2 Calculations of start times by the RC is not protestable by the competitors in the cruising class.

12 TIME LIMIT

12.1 The time limit for the first boat to finish in a division will be 2 hours.

12.2 Boats still racing 30 minutes after the first boat in their division sails the proper course and finishes, and not there after retiring, will be scored TLE (Time Limit Expired). This changes rules 35, A5 and A11.

12.3 Boats scored TLE will be scored by the race committee points equal to the number of boats in their class/division finishing within the time limit plus two without a hearing. This changes rule A4.2

13 PROTESTS AND REQUESTS FOR REDRESS

13.1 A boat intending to protest shall report to the race committee at the signal boat or windward finish boat as soon as possible after finishing, giving the race committee its sail number and the sail number(s) of the protested boat(s).

13.2 Protest forms will be available on the official notice board.

13.3 Protests must be filed with the race committee at regatta headquarters on the deck at the Oriental Marina and Inn within 1 hour after the signal boat docks after the last race of the day.

13.4 As soon as practicable after the protest time limit, the protest committee will post a notice to inform competitors of the schedule of hearings in which they are parties or named as witnesses and the location of the hearings.

14 RADIO COMMUNICATION

14.1 A designated observer on the RC may report visual signals displayed by the race committee over US VHF Channel 78A. Information reported by the designated observer is provided as a courtesy to competitors and does not in any way alter the competitor's responsibility to observe the race committee's visual signals which govern the conduct of the racing. Errors or omissions on the part of the designated observer will not be grounds for requesting redress.

14.2 All boats shall maintain an operating VHF radio. Race Committee will use 78A.

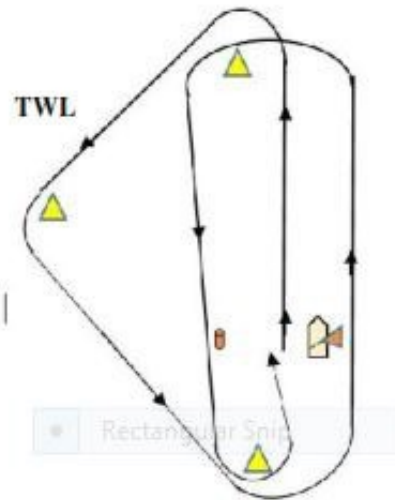
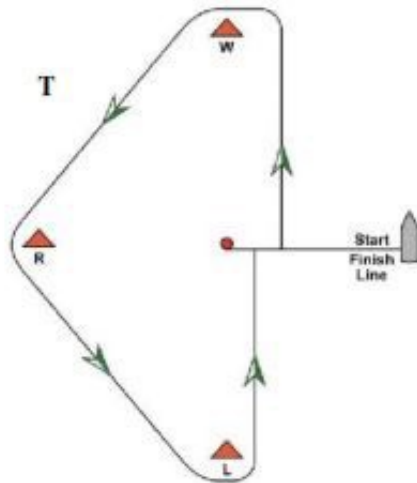
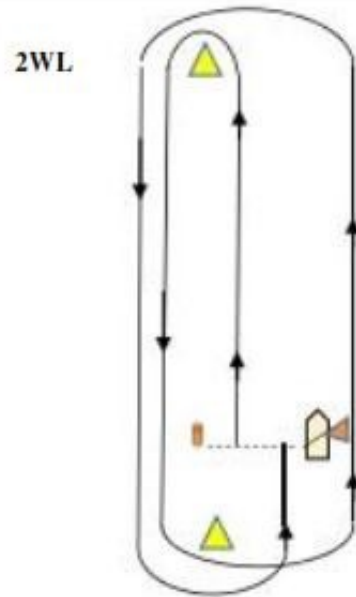
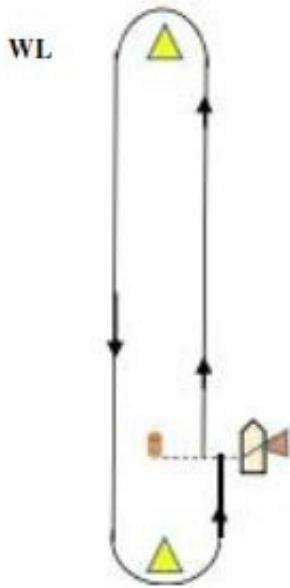
15 PRIZES

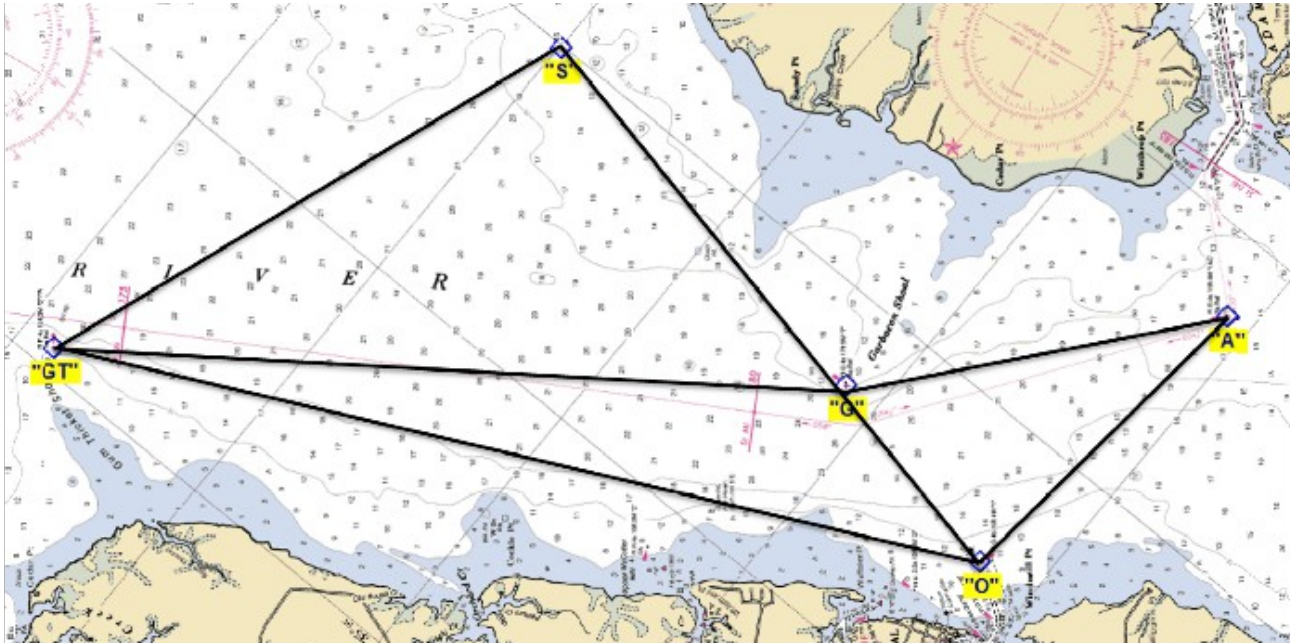
Trophies will be awarded at the Oriental Marina and Inn deck on Sunday at 10:00 AM.

16 DISCLAIMER OF LIABILITY

Competitors participate in the regatta entirely at their own risk. See rule 4, Decision to Race.

APPENDIX





Cruising course diagram.

Note that Mark S (South River) shown above is not on the water and will not be used.